



Lymington Meteorological Station

Location			
OS	434871 E 93530 N		
WGS84	Latitude: 50° 44.42' N Longitude: 01° 30.43' W		
Instrument types			
Vaisala SPH10, Vaisala WAA151, WAV151 and WAC151			
Deployment Date:	12 April 1991		
Height above ground level:	6.6 m OD	Met station on RLYC Starting Platform. Photo courtesy of Fugro Marine GB Limited	Location of met station

Data Quality

Recovery rate wind speed (%)	Recovery rate air pressure (%)	Sample interval
98	98	10 minutes

Yearly Statistics – 2016

All times are GMT

Annual Minima and Maxima		
Min. temperature	-	-
Max. temperature	-	-
Max. rainfall (24h day)	-	-
Max. wind speed	20.1 m/s 39 knots	12-Sep-2017 21:20
Min. air pressure	975 hPa	10-Dec-2017 10:00
Max. air pressure	1039 hPa	18-Jan-2017 08:10

Annual Summary Statistics					
Avg. temperature	-	Total rainfall	-	Avg. wind speed	5.8 m/s
Days of frost¹	-	Days of rain	-	Avg. wind speed	11 knots
Winter days²	-	Avg. relative humidity	-	Avg. wind direction	214°
Summer days³	-	Avg. air pressure	1017 hPa		

Gale Analysis

All times are GMT

Date/Time	Wind speed (m/s)	Wind speed (knots)	Gust (m/s)	Gust (knots)	Dir (°)	Air pressure (hPa)
12-Sep-2017 21:20	20.1	39	24.1	47	210	998
10-Dec-2017 11:00	19.6	38	24.1	47	259	975
22-Nov-2017 21:00	19.5	38	24.3	47	208	991
21-Oct-2017 15:40	19.5	38	23.3	45	240	1004
23-Feb-2017 07:50	18.8	37	22.9	45	237	996

Number of days when:

¹ the temperature dropped below 0 °C at some stage in the 24h day² the maximum temperature was below 0 °C *i.e.* temperature remained below 0 °C for the whole 24h day³ the maximum temperature was 25 °C or over at some stage in the 24h day

Monthly Statistics – 2016

Month	Avg. temp (°C)	Avg. wind speed (m/s)	Avg. wind dir. (°)	Avg. air pressure (hPa)	Total rainfall (mm)	Avg. relative humidity (%)
January	-	4.8	178	1024	-	-
February	-	6.7	189	1014	-	-
March	-	6.3	198	1015	-	-
April	-	4.7	222	1023	-	-
May	-	5.5	158	1017	-	-
June	-	6.3	209	1014	-	-
July	-	6.4	222	1015	-	-
August	-	5.6	230	1017	-	-
September	-	5.9	227	1014	-	-
October	-	6.5	230	1020	-	-
November	-	5.3	253	1018	-	-
December	-	6.2	252	1015	-	-

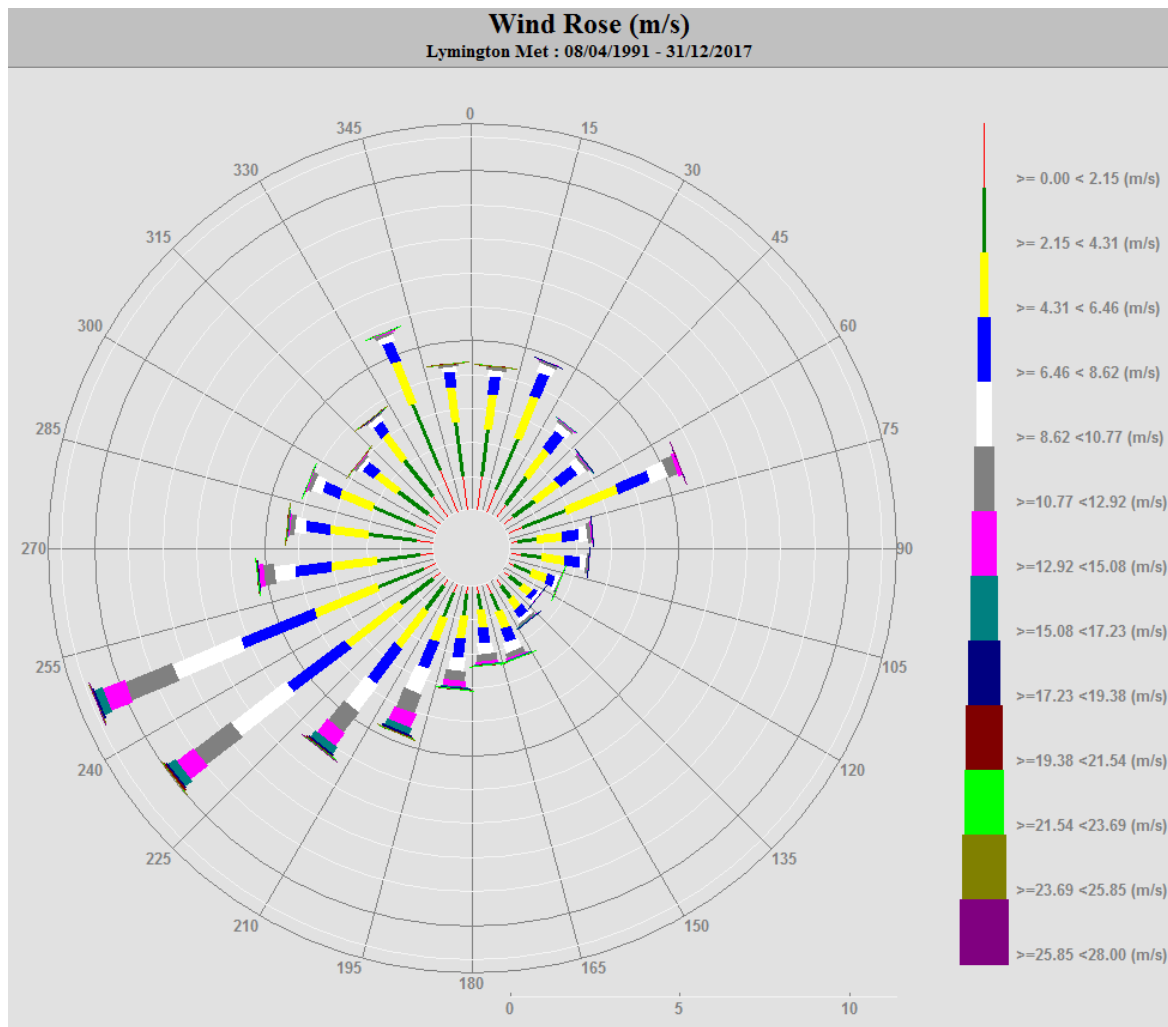
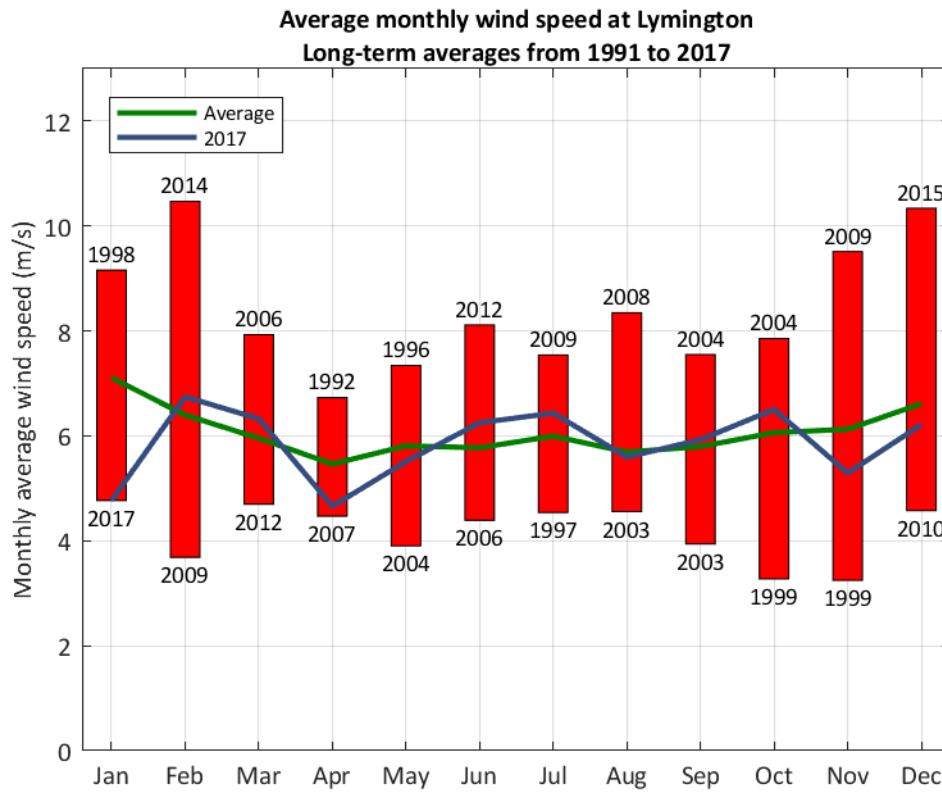
Monthly Statistics – All Years (April 1991 – December 2016)

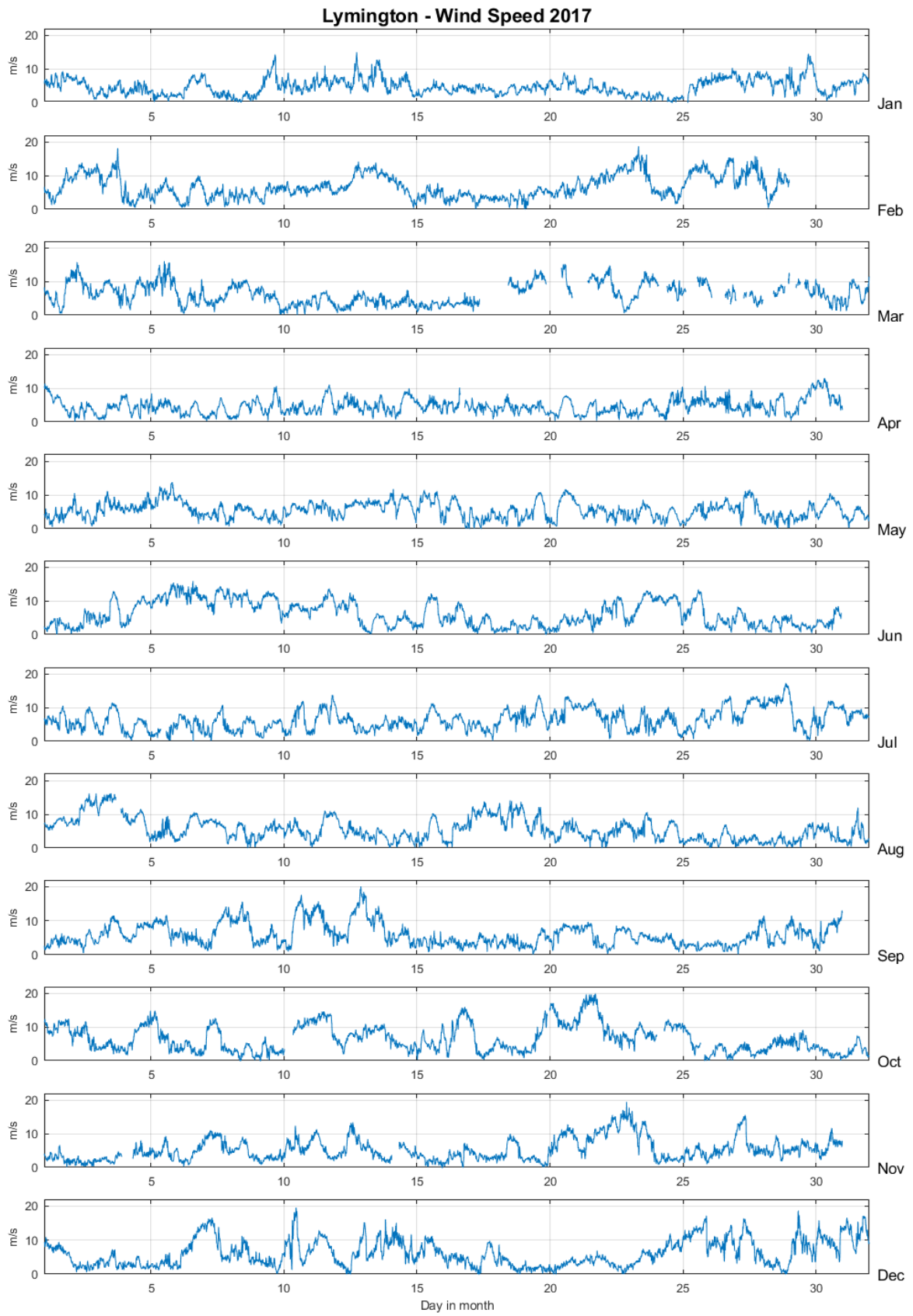
Month	Avg. temp (°C)	Avg. wind speed (m/s)	Avg. wind dir. (°)	Avg. Air pressure (hPa)	Total rainfall (mm)	Avg. relative humidity (%)
January	-	7.2	205	1012	-	-
February	-	6.8	180	1015	-	-
March	-	6.1	165	1017	-	-
April	-	5.8	166	1016	-	-
May	-	5.8	192	1016	-	-
June	-	6.2	190	1017	-	-
July	-	6.3	203	1016	-	-
August	-	5.9	213	1017	-	-
September	-	5.7	204	1018	-	-
October	-	6.1	165	1017	-	-
November	-	6.5	214	1014	-	-
December	-	7.3	206	1018	-	-

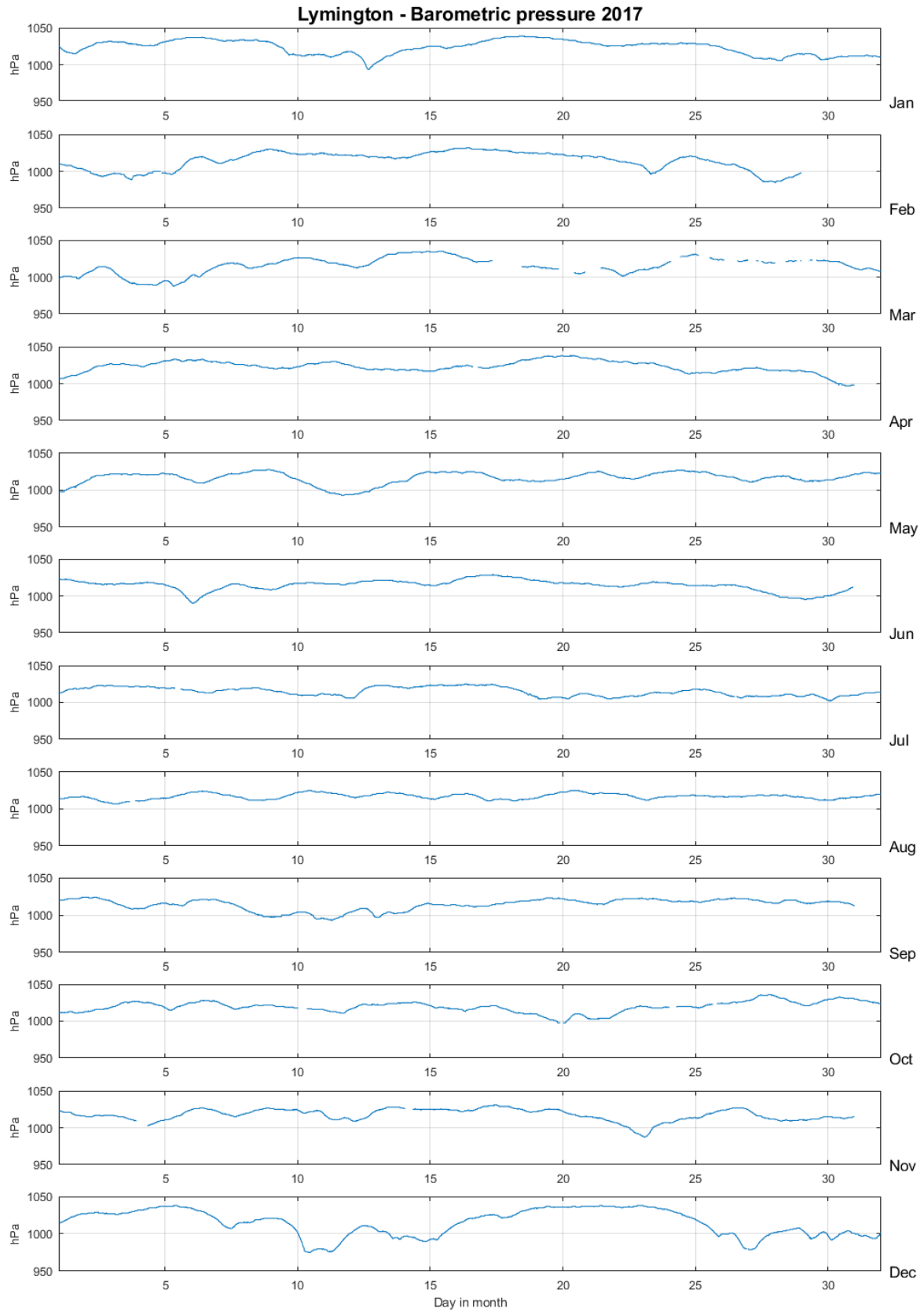
Site Records (April 1991 – December 2017)

All times are GMT

Daily			
Warmest day	-	-	Highest average temp. over 24-h day
Coldest day	-	-	Lowest average temp. over 24-h day
Wettest day	-	-	Most rainfall over 24-h day
Windiest day	8 June 2012	16.5 m/s	Highest average wind speed over 24-h day
Monthly			
Warmest month	-	-	Highest average temp. over month
Coldest month	-	-	Lowest average temp. over month
Wettest month	-	-	Most rainfall over month
Windiest month	February 2014	10.5 m/s	Highest average wind speed over month
Annually			
Warmest year	-	-	Highest average temp. over year
Coldest year	-	-	Lowest average temp. over year
Wettest year	-	-	Most rainfall over year
Windiest year	2014	6.9 m/s	Highest average wind speed over year







Acknowledgements

The meteorological station is deployed on the Starting Platform, by kind permission of the Royal Lymington Yacht Club.

The long term average graphs were adopted from the Belgian Royal Meteorological Institute's yearly climatological overview reports.