

## Weymouth Directional Waverider Buoy

### Location

OS: 370833E 80423N

WGS84: Latitude: 50° 37.366' N Longitude: 02° 24.820' W

### Water Depth

~10 m CD

### Instrument Type

Datawell Directional Waverider Mk III

### Data Quality

Recovery rate (%)	Sample interval
99	30 minutes

### Statistics - 2011

All times are GMT

Month	H <sub>s</sub> (m)	T <sub>p</sub> (s)	T <sub>z</sub> (s)	Dir. (°)	SST (°C)	No. of days
January	0.54	6.9	4.0	148	7.2	31
February	0.61	9.9	4.2	159	7.2	28
March	0.41	5.9	3.6	141	8.0	31
April	0.30	6.7	3.7	145	10.4	30
May	0.43	5.3	3.5	162	12.5	31
June	0.41	5.3	3.5	158	14.5	30
July	0.30	5.5	3.5	156	16.2	31
August	0.31	5.0	3.5	159	17.3	31
September	0.47	5.6	3.4	165	16.8	30
October	0.55	6.5	3.6	163	15.8	28
November	0.69	6.6	3.9	148	14.0	30
December	0.55	7.5	4.3	169	10.9	31

### Storm Analysis

Date/Time	H <sub>s</sub> (m)	T <sub>p</sub> (s)	T <sub>z</sub> (s)	Dir. (°)	Water level elevation* (OD)	Tidal stage (hours re. HW)	Tidal range (m)	Tidal surge* (m)	Max. surge* (m)
24-Oct-2011 00:00	2.30	6.7	5.2	131	-0.12	HW -4	1.3	0.18	0.26

\* Tidal information is obtained from the nearest recording tide gauge (the National Network gauge at Weymouth). The surge shown is the residual at the time of the highest H<sub>s</sub>. The maximum tidal surge is the largest positive surge during the storm event.

## Annual Statistics

Year	Annual $H_s$ exceedance* (m)						Annual Maximum $H_s$	
	0.05%	0.5%	1%	2%	5%	10%	Date	$A_{max}$ (m)
2007	2.29	1.72	1.43	1.24	1.03	0.85	18-Nov-2007 13:30	2.56
2008	2.57	1.95	1.75	1.46	1.1	0.89	03-Feb-2008 13:00	2.74
2009	2.17	1.75	1.63	1.48	1.18	0.90	13-Nov-2009 23:30	2.62
2010	2.54	1.84	1.54	1.29	1.00	0.81	17-Nov-2010 10:00	2.81
2011	2.16	1.77	1.54	1.26	1.03	0.85	24-Oct-2011 00:00	2.30

\* i.e. 5 % of the  $H_s$  values measured in 2007 exceeded 1.03 m

## Distribution plots

The distribution of wave parameters are shown in the accompanying graphs of:

- Annual time series of  $H_s$  (red line is 2.4 m storm threshold)
- Wave roses (Direction vs.  $H_s$  and vs.  $T_p$ ) for all measured data
- Percentage of occurrence of  $H_s$ ,  $T_p$ ,  $T_z$  and Direction for 2011
- Incidence of storm waves for 2011. Storm events are defined using the Peaks-over-Threshold method. The highest  $H_s$  of each storm event is shown
- Joint distribution of all parameters for all measured data, given as percentage of occurrence

## Significant wave height return periods

Return periods for significant wave height can be calculated since the buoy has been deployed for more than 5 years. The return periods are based on 3-hourly records and are calculated for periods up to 10 times the record length, using a Weibull distribution.

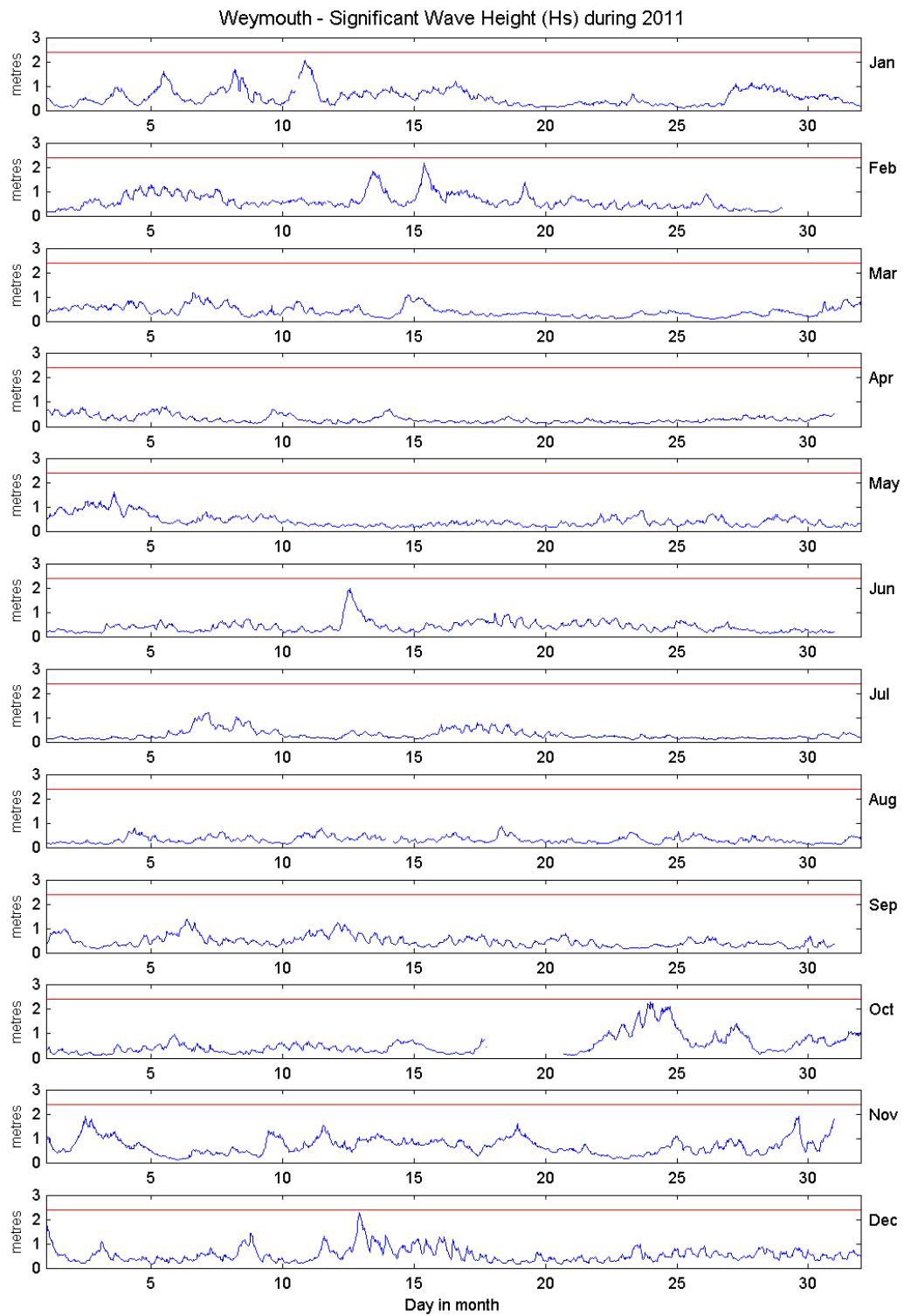
Return period (years)	Significant wave height (m)	Comments
1	2.68	No depth limitation
2	2.79	
5	2.93	
10	3.03	
20	3.13	
50	3.26	

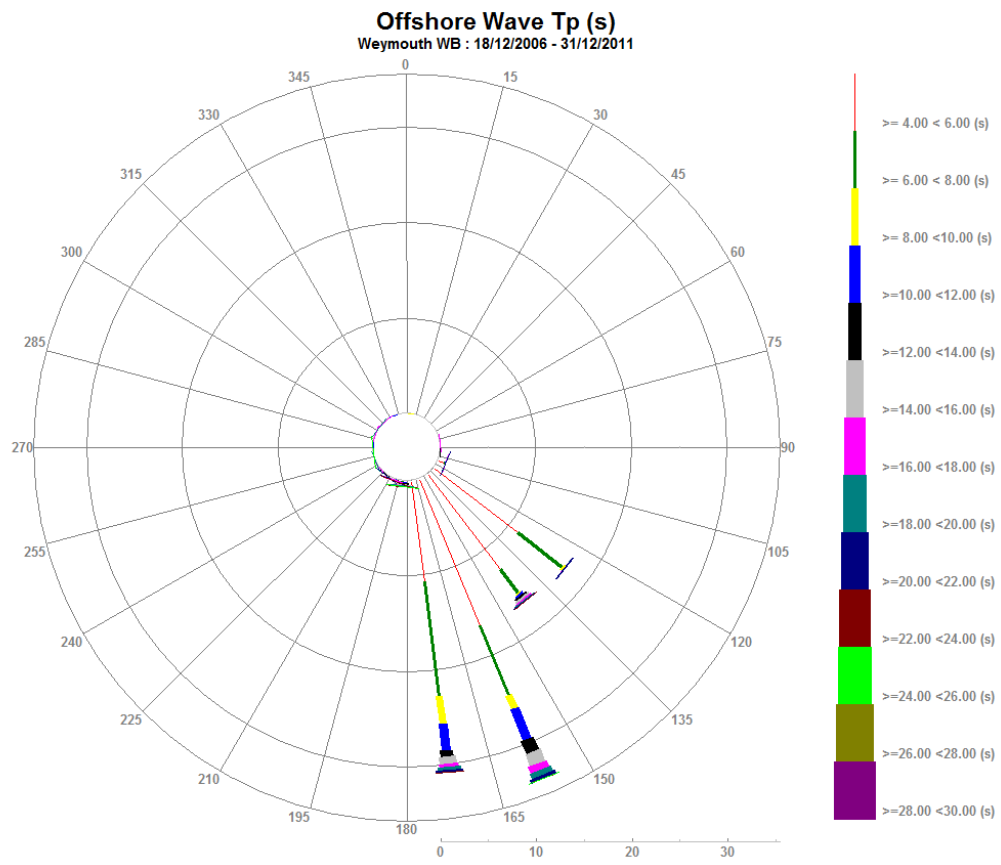
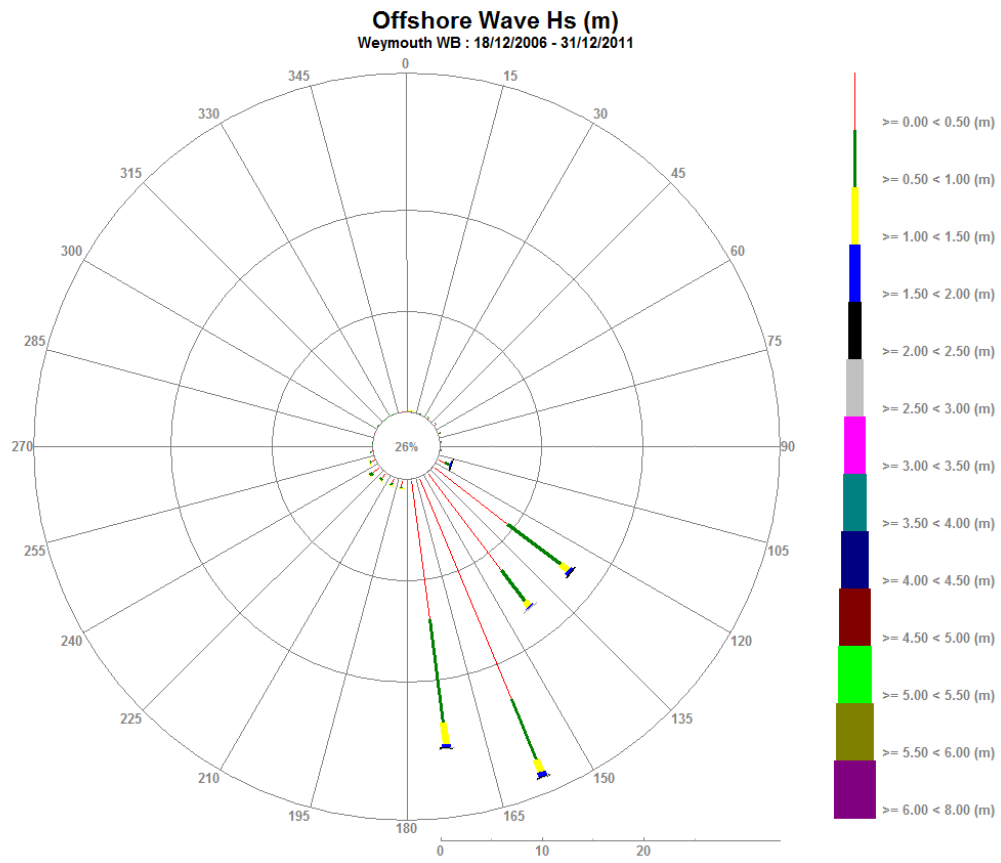
## General

The buoy was first deployed on 18 December 2006.

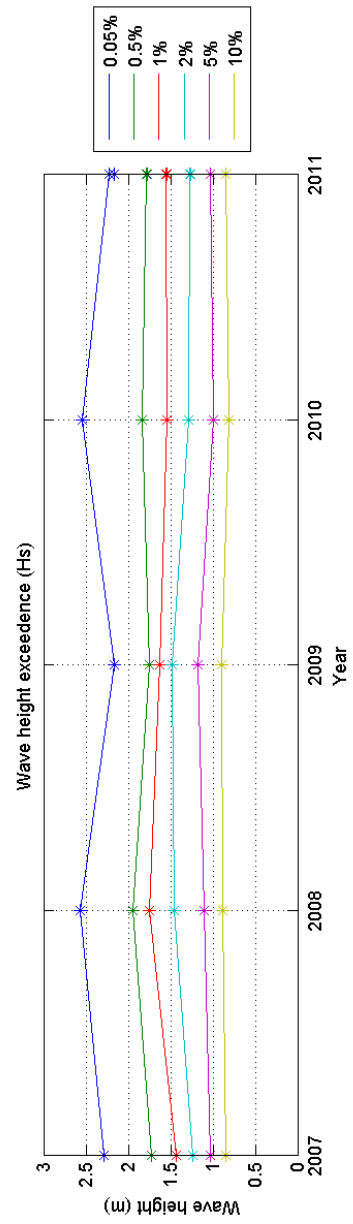
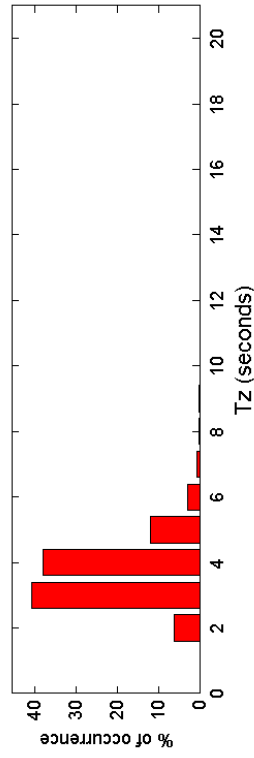
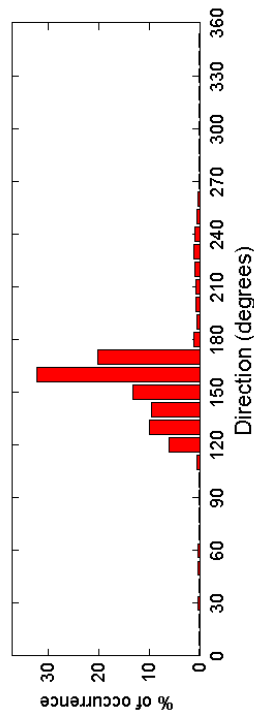
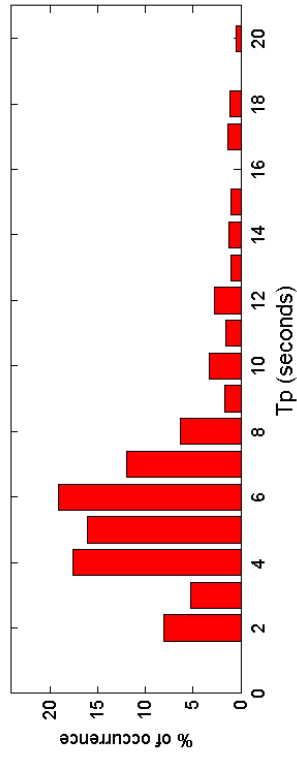
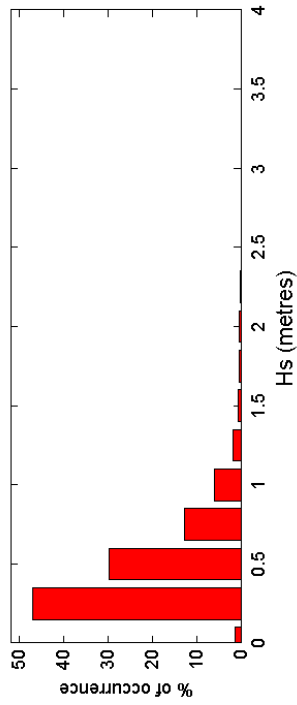
## Acknowledgements

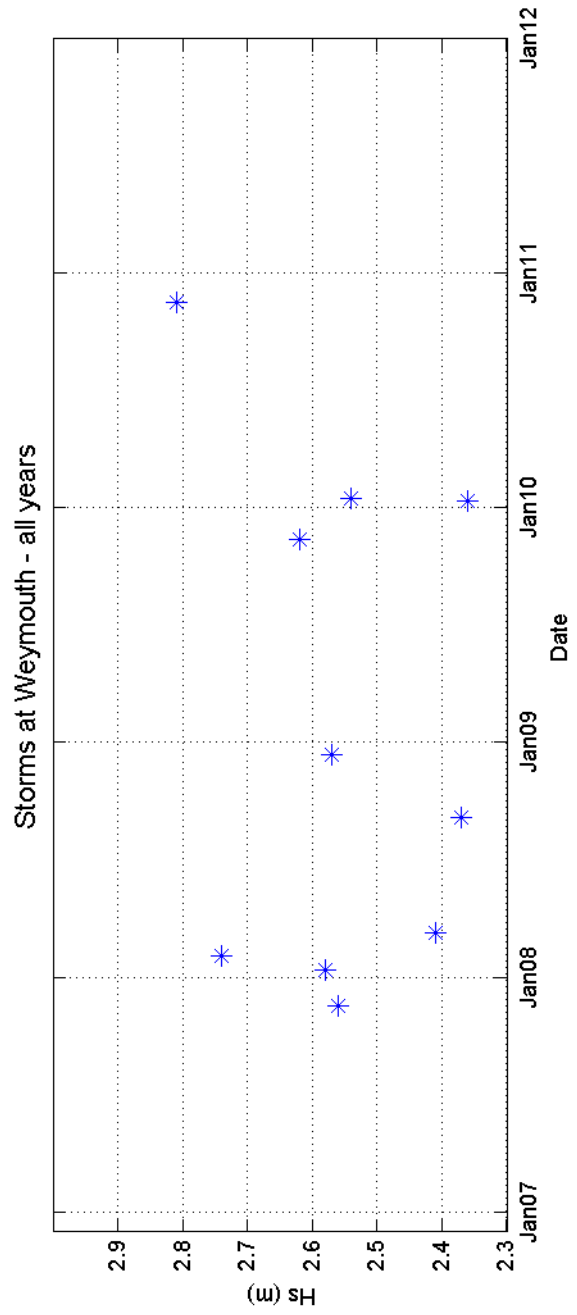
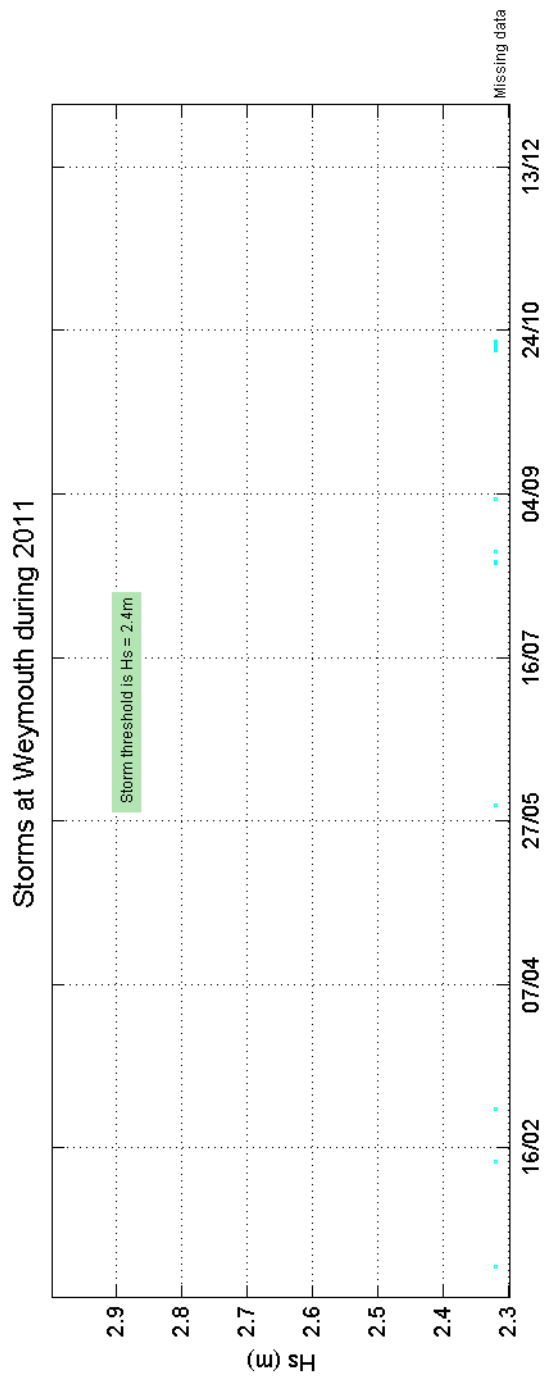
The shore station is kindly hosted by the Weymouth and Portland National Sailing Academy. Tidal data were supplied by the British Oceanographic Data Centre as part of the function of the National Tidal and Sea Level Facility, hosted by the Proudman Oceanographic Laboratory and funded by DEFRA and the Natural Environment Research Council.





Weymouth 2011





Weymouth 2006 to 2011 - Joint distribution (% of occurrence)

