

Channel Coast News

Issue 7 - November 2003

The newsletter for the Southeast Strategic Regional Coastal Monitoring Programme www.channelcoast.org

Regional News

South East Coastal Group

Topographic baseline and Autumn surveys for the entire area are now nearing completion. Data is beginning to arrive and is being validated prior to being sent to CCO for the website.

Work on the bathymetric surveys has halted due to adverse weather conditions. The majority of the data for Ramsgate Harbour to Beachy Head has been collected with the remaining areas being now planned for completion in spring 2004.

South Downs Coastal Group

Gardline Environmental has been sharing resources between the SDCG and SECG regions, based around weather and tidal conditions. They have employed a second vessel (Coastal Sounder) that has been working out of Littlehampton Marina since late September. Work is currently ongoing along the Bognor/Pagham frontage and there are approximately 10 vessel days remaining of the survey.



The contract for Post Storm and Beach Management Plan Surveys will be run as three packages: Selsey to River Arun, Rivers Arun to Adur and from River Adur to Birling Gap. The tender went out to a select list of 6 tenderers in early October and is due back on 21 November.

Work to create GIS-based structural datasets from the 2001 orthophotos for the entire SDCG frontage is ongoing. However, those local authorities who have not yet provided their structural references are urged to do so, to allow completion of this work.

A review of the SDCG's finances and reporting for the project has been undertaken over the past month with a view to keeping our project partners better informed of

spending progress; in turn this should allow each of them to budget more effectively.

SCOPAC

Topographic surveying has continued whenever possible, although progress is now being severely curtailed by lack of daylight hours; much of the coast of the Isle of Wight in particular will have no Low Water Spring tides in daylight hours for several months.

Titan Surveys deployed late last month to begin their hydro survey of the Isle of Wight, but only one Management Unit was completed before bad weather forced demobilisation.

Environment Agency (Southern Region)

The aerial photography contract has been awarded to Kampsax. To date, they have flown from Dungeness to Isle of Grain and from Swanage to Portland at 1:5000 scale. Kampsax will supply the scanned images for these areas within the next few weeks and the contact copies at the beginning of December.

Final reports regarding the Ground Control Network have been supplied by BKS and L&B and are undergoing final internal checks before being disseminated to the project group. The LiDAR contract is currently being finalised following the receipt of comments on the task schedule and specification.

Discussions are ongoing with English Nature to incorporate biodiversity issues into the project.

Channel Coastal Observatory

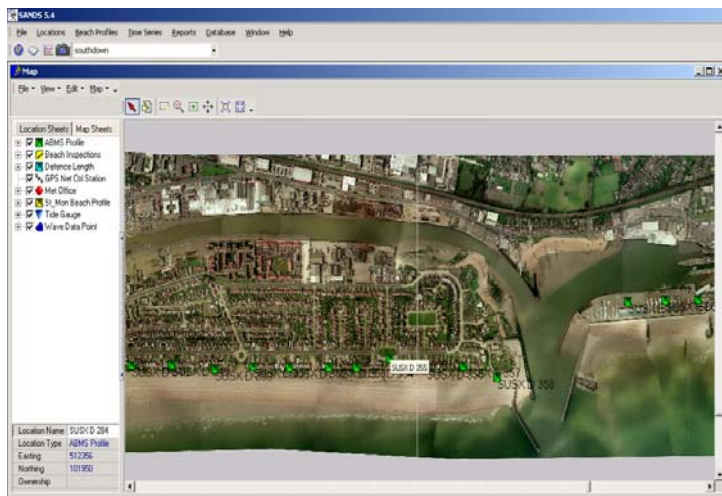
Site visits to the wave/tide gauges at Deal and Eastbourne Piers have taken place. After detailed discussions with Dover CC a replacement instrument and met station have been selected and will be installed as soon as possible. The tide gauge at Eastbourne was found to be faulty and has been removed to the SOC for further investigation and, if possible, repair.

Metadatabase forms for loading aerial photographs, topographic and hydro surveys to the archive database are being tested. Case studies illustrating the need for monitoring are needed *urgently* for the website – please send suggestions via the usual channels.

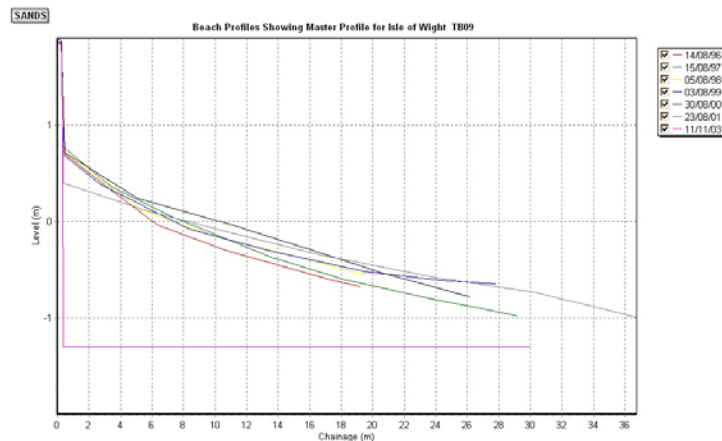
SANDS

Halcrow's Shoreline And Nearshore Data System (SANDS) is the GIS database which has been chosen as the standard for the Regional Monitoring Programme, both for storage of data and for much of the data analysis.

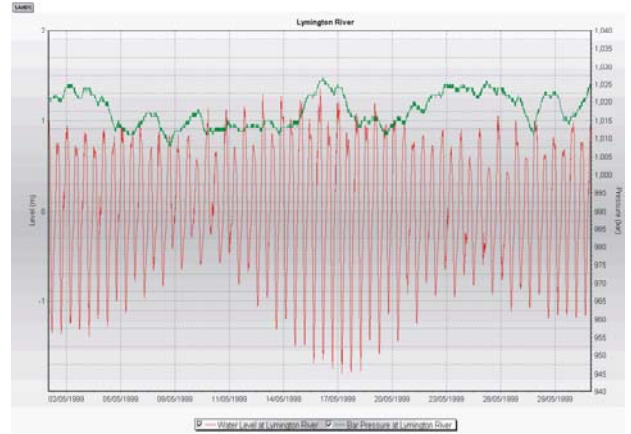
When supplied to Project Partners, the SANDS databases are populated with a backdrop of aerial photographs. Historical data have been included where available. Different types of information are kept in separate layers *e.g.* management unit boundaries, beach profiles, survey ground control points, tidal elevation time series and wave refraction points.



For analysis of beach profiles, a master profile is created and changes to beach cross-section are monitored relative to this profile (see pink line on diagram below).



Time series data can be stored such as tidal elevation, wave parameters, wind speed and direction and barometric pressure. The time series data can be analysed to produce statistics which represent an annual wave climate and extreme water levels due to storm surges.



Planned future developments for SANDS include new forms to record beach replenishment/recycling and revised analysis of tidal data; these can be used subsequently for engineering design conditions.

What's New?

In response to requests from Project Partners, GIS training days are being planned. Separate days will be offered for MapInfo and ArcView if there is demand, with other GIS packages covered on a one-to-one basis if necessary. Further details are being distributed via the usual channels.

Contacts

If you have any queries about the Strategic Regional Coastal Monitoring Programme, or would like a personal copy of this newsletter by email, please contact your area representative:

South East Coastal Group: Chris Longmire
Strategic.Monitoring@Canterbury.gov.uk

South Downs Coastal Group: Dan Amos
Strategic.Monitoring@Worthing.gov.uk

SCOPAC: Travis Mason
tem@soc.soton.ac.uk

Environment Agency: Helen Dalton
Strategic.Monitoring@environment-agency.gov.uk

Regional Co-ordinator: Andy Bradbury
Andy.Bradbury@soc.soton.ac.uk

or contact the regional data management centre:

Channel Coastal Observatory
 Southampton Oceanography Centre
 European Way, Southampton
 SO14 3ZH
 Tel: 02380 598467
cco@channelcoast.org