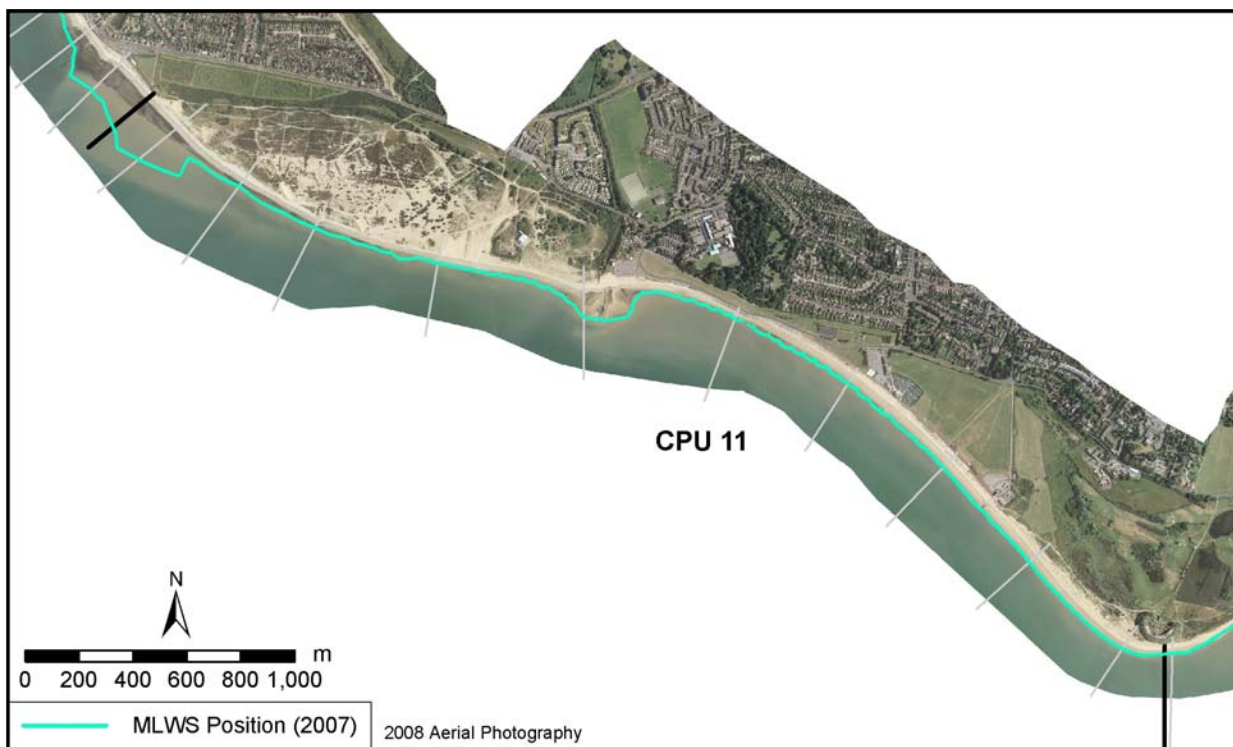


Policy Unit: 5b CPU11

Fort Gilkicker to Browndown Ranges

Topographic Beach Profiles 5b00073 – 5b00162



Summary

This large management unit has a natural gravel beach along the entire frontage. To the west, at Browndown Ranges, there is a large subaerial gravel area used for military training which is fronted by numerous low gravel ridges and a narrow, steep beach. Near the center of the unit, the muddy foreshore widens in the vicinity of the river Alver and the gravel beach is at its narrowest. Eastwards, towards Fort Gilkicker, the gravel beach widens to approximately 80-100m and the muddy foreshore disappears entirely. Sea defences comprise a 900m seawall from Stokes Bay café to Military Road.

Survey Regime

| Survey type | Frequency | Profile spacing/survey extent |
|---|-----------|------------------------------------|
| <i>Topographic baseline</i> | 5 years | 50m to MLWS |
| <i>Topographic interim profile</i> | Spring | 300 - 500m to MLWS |
| <i>Bathymetry</i> | 5 years | 50m profiles, MLWN to 1km offshore |
| <i>Ortho-photography</i> | 5 years | MLWN |
| <i>Non-rectified aerial photography</i> | Annual | MLWN |
| <i>Lidar</i> | Annual | MLWN |
| <i>Habitat mapping</i> | 5 Years | Extent of aerial photography |