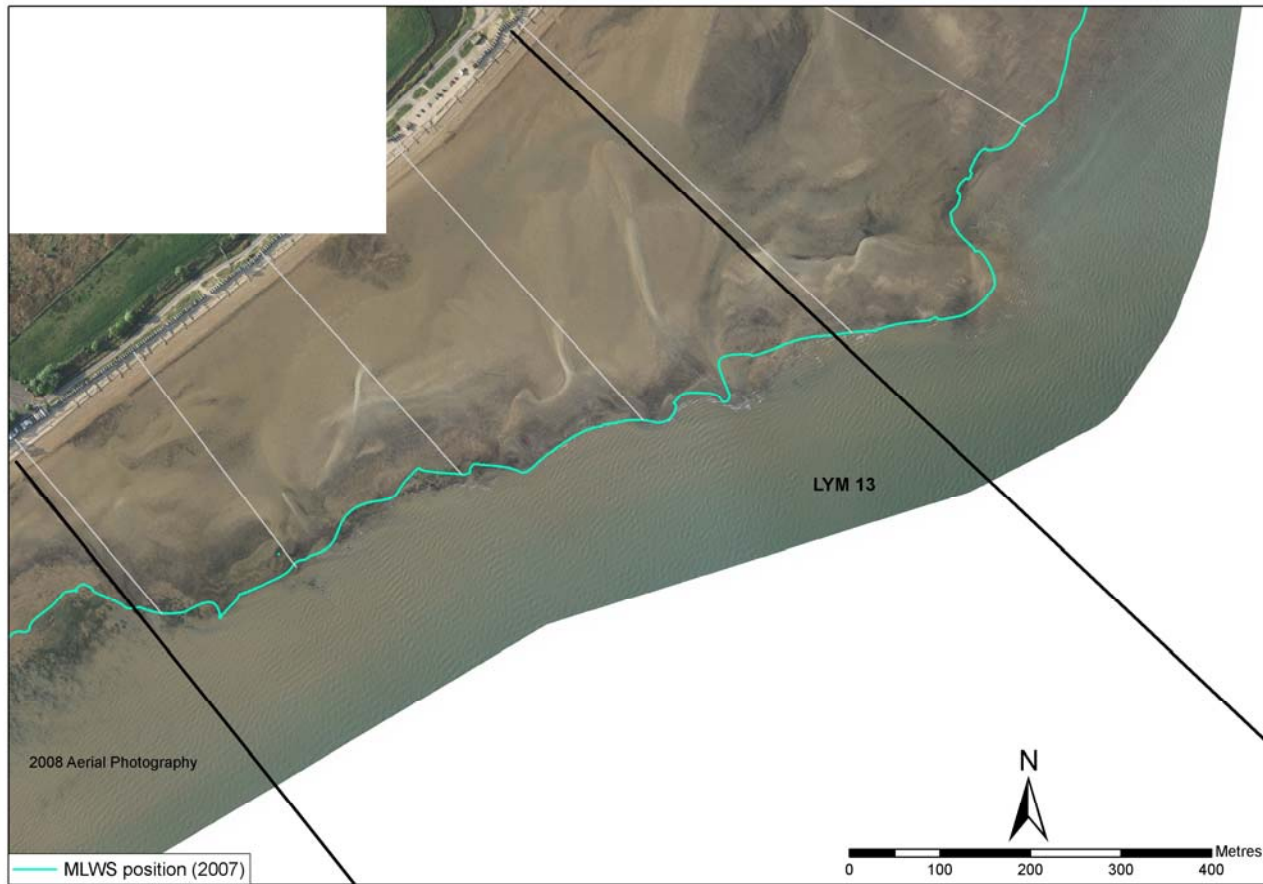


Policy Unit: 5c LYM13

Calshot Spit to Hillhead

Topographic Beach Profiles 5c00273 – 5c00263



Summary

This policy unit comprises a narrow gravel beach fronted by a wide foreshore of gravels, sands and muds extending up to 450m from the beach toe. The beach and is protected by softwood timber groynes and revetments which extend along the length of the unit. Behind the beach are beach huts and a low-lying, reclaimed hinterland.

Survey Regime

Survey type	Frequency	Profile spacing/survey extent
<i>Topographic baseline</i>	5 years	50m to MLWS
<i>Topographic interim profile</i>	Spring and Autumn	200m to MLWS
<i>Bathymetry</i>	5 years	50m profiles to 1km offshore
<i>Ortho-photography</i>	5 years	MLW
<i>Non-rectified aerial photography</i>	Annual	MLW
<i>Lidar</i>	5 years	MLW
<i>Habitat mapping</i>	5 Years	Extent of ortho-photography