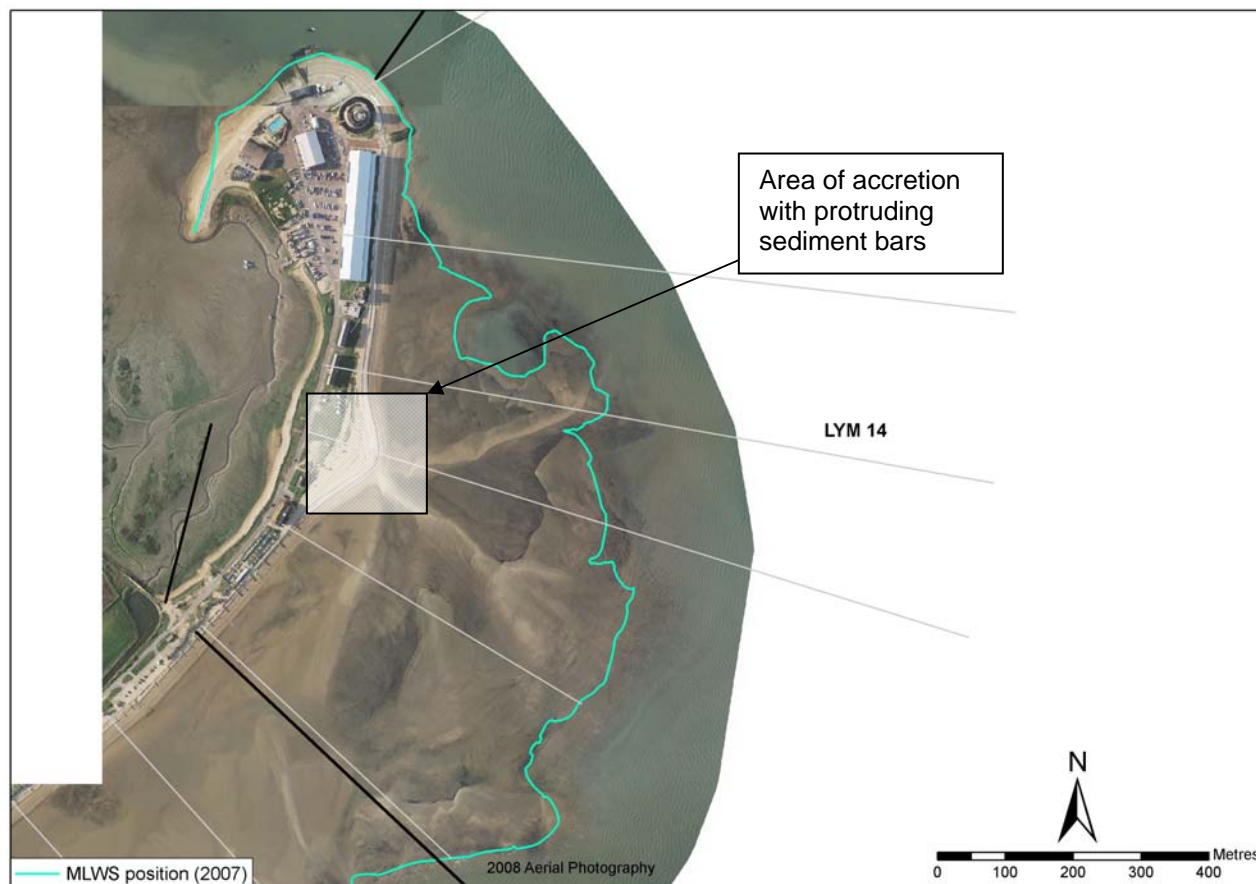


## Policy Unit: 5c LYM14

### Calshot Spit

Topographic Beach Profiles 5c00259 – 5c00240



#### Summary

This policy unit covers the distal end of Calshot Spit, which extends north-eastwards and affords some protection from storm waves to the saltmarshes in its lee and to Southampton Water. Since 1989, topographic monitoring has shown the spit has undergone an overall accumulation of beach material. There is an area of distinct accretion where two arms of sediment extend eastwards, constantly changing orientation.

The spit is home to numerous beach huts, a mediæval Castle, a road and Calshot Activity Centre and associated facilities. There are timber groynes and revetments at the southern end of the Unit. The remaining frontage consists of relict timber groynes and a concrete seawall. Minor beach replenishment was carried out at the southern end of the unit in 1999, with sediment sourced from the distal side of the RNL station, at the northern tip of the spit. Sediment was placed on the upper beach fronting the boundary between LYM14 and LYM13.

## Survey Regime

Survey type	Frequency	Profile spacing/survey extent
<i>Topographic baseline</i>	5 years	50m to MLWS
<i>Topographic interim profile</i>	Spring and autumn	200m to MLWS
<i>Bathymetry</i>	5 years	50m profiles to 1km offshore
<i>Ortho-photography</i>	5 years	MLW
<i>Non-rectified aerial photography</i>	Annual	MLW
<i>Lidar</i>	Years 1 and 4	MLW
<i>Habitat mapping</i>	5 Years	Extent of aerial photography

## Summary of beach operations

Date	Operation	Quantity (m <sup>3</sup> )	Location/Notes
<b>1999</b>			
1999	Beach replenishment	<b>1000</b>	Sediment taken from RNLI station and placed on LYM14 frontage

*Full details of beach operations can be obtained from New Forest District Council*