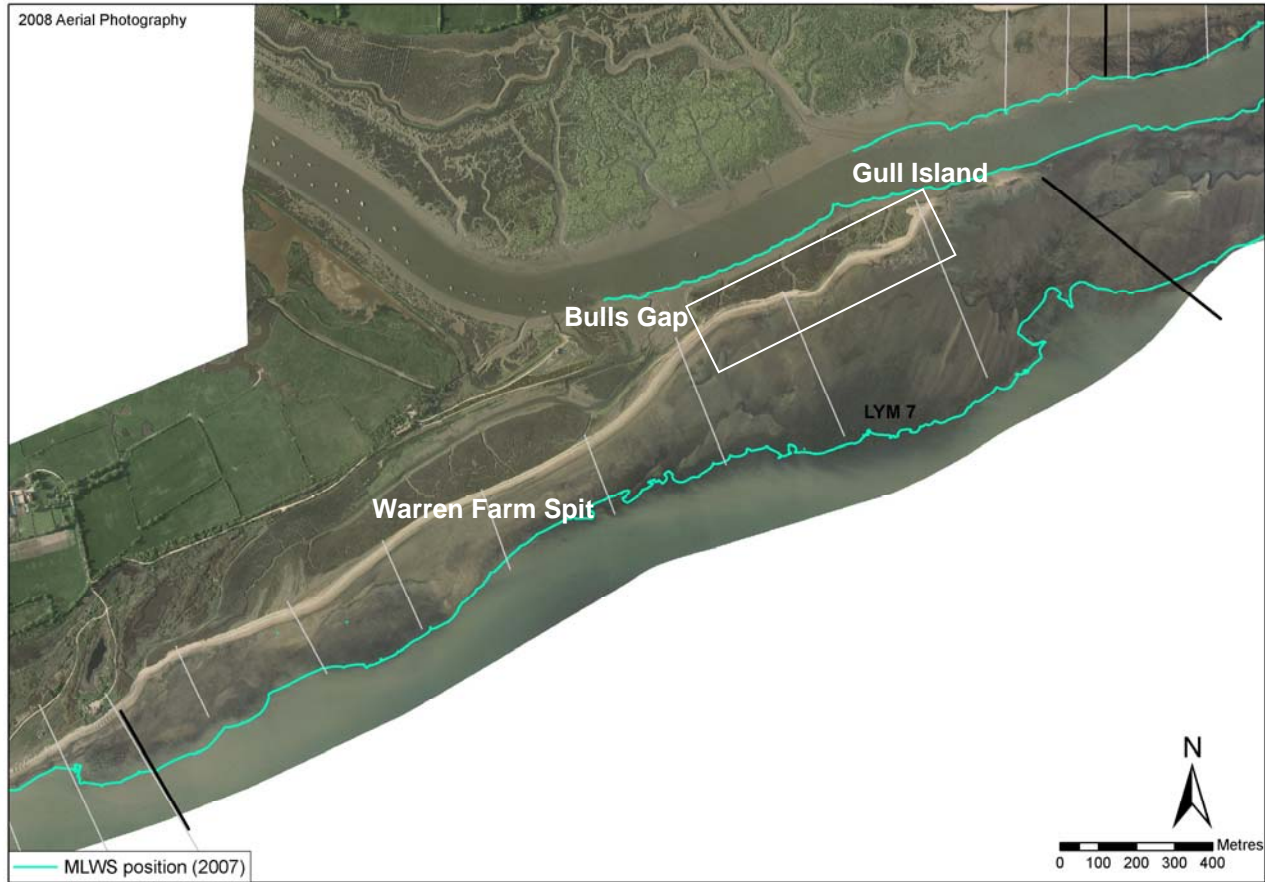


Policy Unit: 5c LYM7

Warren Farm Spit

Topographic Beach Profiles 5c00438 – 5c00394



Summary

This policy unit covers the gravel spit which extends north-eastwards from Warren Farm towards the mouth of the Beaulieu River. The spit is realigning in response to a very low sediment supply and longshore transport, and south-westerly and south-easterly wave attack (North Solent Shoreline Management Plan, 2010 *draft*). Occasional storms appear to promote rapid short-term growth, for example, there was approximately 100m of distal extension across former mudflats in 1952/3 (*FutureCOAST*, 2002). The storm in 1952/3, however, resulted in the breach of the spit and the opening of Bulls Gap, which separated Warren Farm Spit from Gull Island. In 1986, Bulls Gap was recharged with gravel to close the gap and Gull Island now adjoins the spit (North Solent Shoreline Management Plan, 2010 *draft*).

Survey Regime

Survey type	Frequency	Profile spacing/survey extent
<i>Topographic baseline</i>	5 years	50m to MLWS
<i>Topographic interim profile</i>	Spring and Autumn	200m to MLWS
<i>Bathymetry</i>	5 years	50m profiles to 1km offshore
<i>Ortho-photography</i>	5 years	MLW
<i>Non-rectified aerial photography</i>	Annual	MLW
<i>Lidar</i>	5 years	MLW