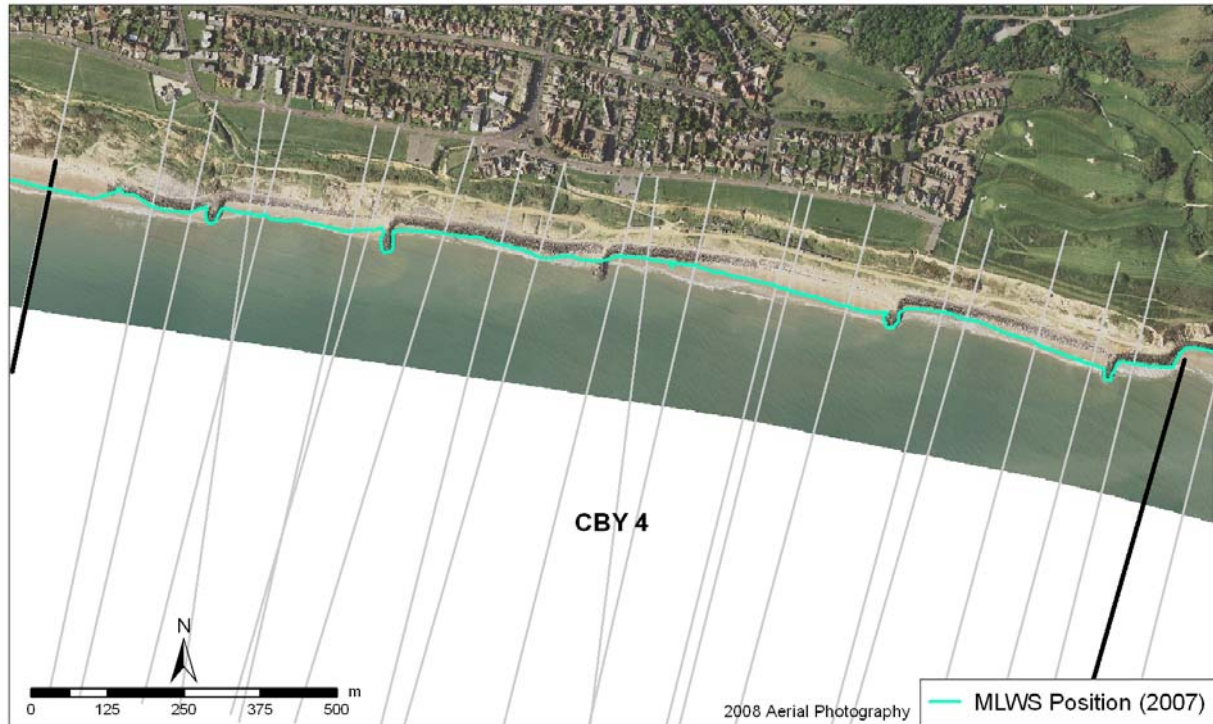


Policy Unit: 5f CBY4

Barton-on-Sea

Topographic Beach Profiles: 5f00201 to 5f00163



Summary

The stretch of coastline at Barton-on-Sea is heavily defended with continuous rock armour revetment and five rock armour groynes approximately 50m in length normal to the shoreline. These have acted to interrupt the dominant west to east sediment transport direction and reduce erosion of the soft clay and sand cliffs which back the defences. Historic cliff management intervention has involved a variety of techniques to stabilise the cliffs, although several cliff re-activations have occurred. The western end of this policy unit is currently experiencing an active landslide and the sheet piling originally placed to help stabilize the cliffs has been significantly exposed. There is a narrow sand and shingle beach in front of the revetment which is largely submerged at times of High Water.

There are currently no recycling operations or beach maintenance works within this policy unit.

Survey Regime

Survey type	Frequency	Profile spacing/survey extent
<i>Topographic baseline</i>	5 years	20-65m to MLWS
<i>Topographic interim profile</i>	Spring and autumn	20-150m to MLWS
<i>Bathymetry</i>	Annual	50m profiles to 1km offshore
<i>Ortho-photography</i>	5 years	MLWN
<i>Non-rectified aerial photography</i>	Annual	MLWN
<i>Lidar</i>	Years 1, 2, 3, 5	MLWN
<i>Habitat mapping</i>	5 Years	Extent of ortho-photography