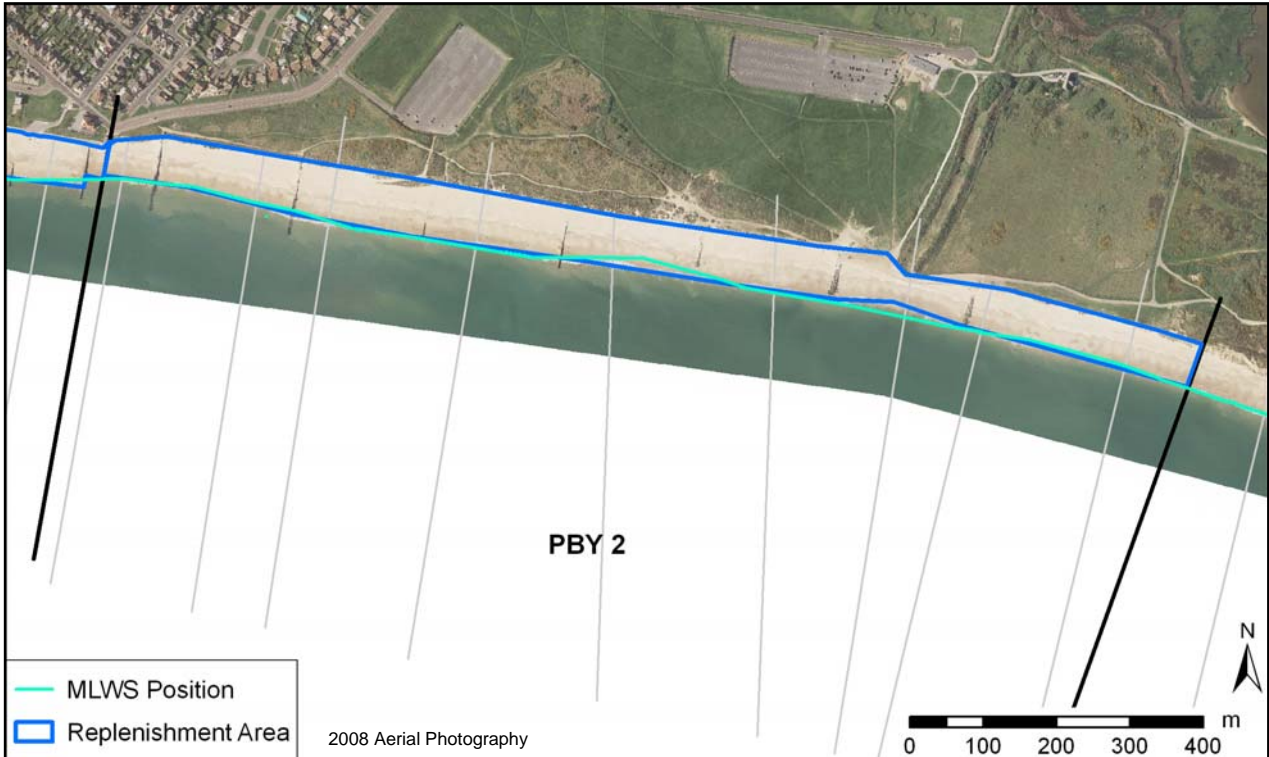


Policy Unit: 5f PB2

Warren Hill Point to House Café

Topographic Beach Profiles 5f00373 to 5f00386



Summary

The majority of this unit is composed of gravel and sand, backed by a low-lying cliff on which sand dunes have formed. Coastal defence structures consist of a combination of timber and rock groynes. Repair work to two of the old damaged timber groynes, commencing in November 2009, included rock armour being placed on the seaward end of groynes 51 and 52. There are rock gabions protecting the lower lying region between Double Dykes and Warren Hill in the eastern part of the frontage.

An ongoing beach replenishment programme, referred to as Beach Improvement Schemes (BIS), is in operation in this region. BIS4.4, the most recent replenishment, was completed in March 2009 with 74,192m³ of material placed on the beach at Southbourne.

Given that the predominant direction of longshore transport in Poole Bay is from west to east, other beach replenishments within Poole Bay since 1970 have provided a substantial source of additional material.

Survey Regime

Survey type	Frequency	Profile spacing/survey extent
<i>Topographic baseline</i>	5 years	75 - 150m to MLWS
<i>Topographic interim profiles</i>	Spring and autumn	100m - 200m to MLWS
<i>Bathymetric baseline</i>	Spring	50m profiles to 500m offshore
<i>Bathymetric interim profiles</i>	Autumn	100m - 200m profiles to 500m offshore
<i>Ortho-photography</i>	5 years	MLW
<i>Non-rectified aerial photography</i>	Annual	MLW
<i>Lidar</i>	Annual	MLW
<i>Habitat mapping</i>	5 Years	Extent of ortho-photography

Summary of beach operations

BIS = Beach Improvement Scheme

HHSBR = Hengistbury Head Solent Beach Replenishment

Date	Operation	Quantity (m ³)	Location/Notes
2009			
November	Groyne Repair	-	End of damaged timber groynes (51 & 52) replaced with rock armour.
March	Replenishment Scheme BIS4.4	74,000	Southbourne: Groynes 50-53 (Profiles 5f00382-5f00386_
2006			
January	Replenishment Scheme BIS4.1	600,000 (inc. PBY1b)	Boscombe Pier to Double Dykes
1989			
January	Replenishment Scheme HHSBR.2	72,000	PBY2 Replenishment
1988			
September	Replenishment Scheme HHSBR.1	77,000	PBY2 Replenishment

Full details of beach operations can be obtained from Bournemouth Borough Council