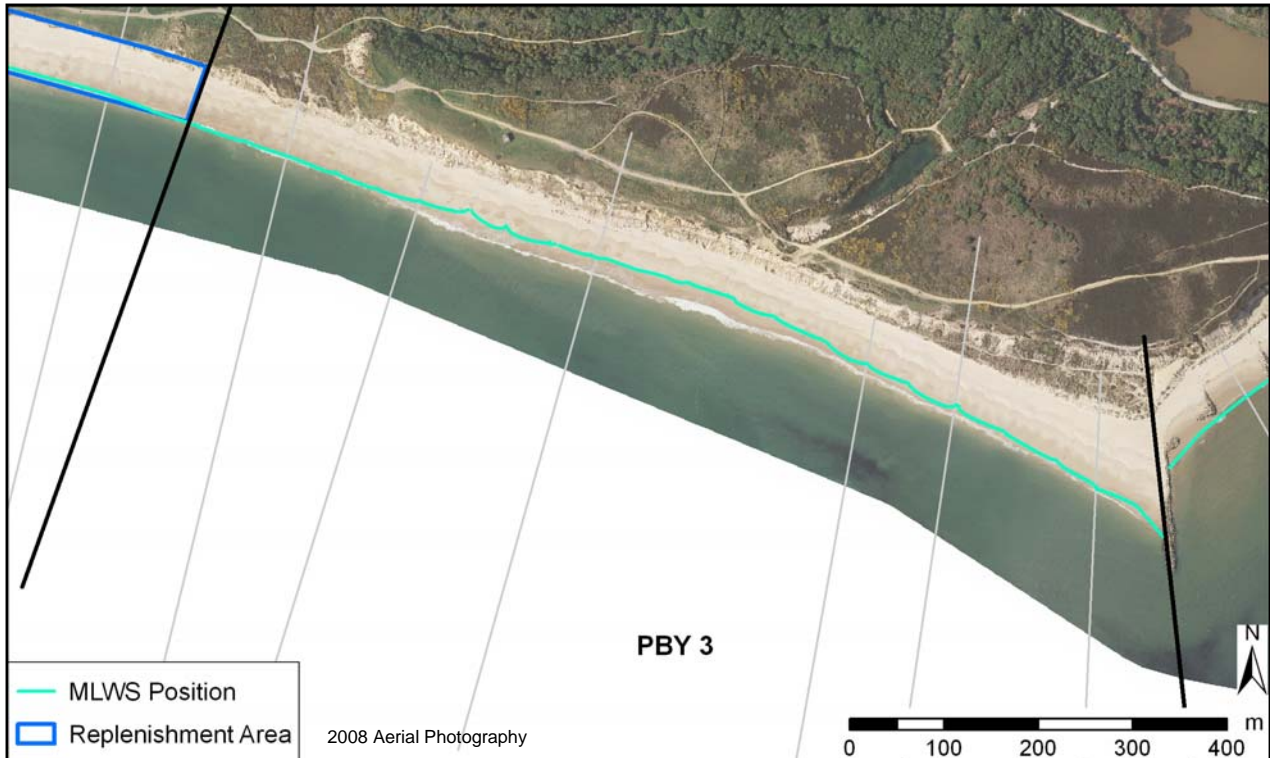


Policy Unit: 5f PBY3

Hengistbury Head to Warren Hill

Topographic Beach Profiles 5f00362 to 5f00369A



Summary

The entire stretch of the policy unit is backed by the soft headland cliffs, which rise in height from approximately 15m at Warren Hill, to 36m at Hengistbury Head. The cliffs are fronted by a beach consisting of a combination of gravels and sands, becoming increasingly coarser at the eastern end compared to the finer sand that is more prominent to the west (as highlighted in the annual sediment sampling surveys).

PBY3 is largely undefended, with the exception of one rock groyne, aptly known as "The Long Groyne", which marks the eastern boundary of the policy unit at Hengistbury Head. This intercepts the littoral beach drift from west to east around Poole Bay. Consequently material has built up west of the Long Groyne, creating a large accreting beach and sand dune system, which currently acts as a defence against erosion of the Headland. The beach also benefits from the replenishment schemes in the rest of Poole Bay which have been implemented since the 1970's and including the most recent replenishment in March 2009 in the neighbouring unit, PBY2.

Survey Regime

Survey type	Frequency	Profile spacing/survey extent
<i>Topographic baseline</i>	5 years	100 - 150m to MLWS
<i>Topographic interim profiles</i>	Spring and autumn	150m - 300m to MLWS
<i>Bathymetric baseline</i>	Spring	50m profiles to 500m offshore
<i>Bathymetric interim profiles</i>	Autumn	150m - 300m profiles to 500m offshore
<i>Ortho-photography</i>	5 years	MLW
<i>Non-rectified aerial photography</i>	Annual	MLW
<i>Lidar</i>	Annual	MLW
<i>Habitat mapping</i>	5 Years	Extent of ortho-photography