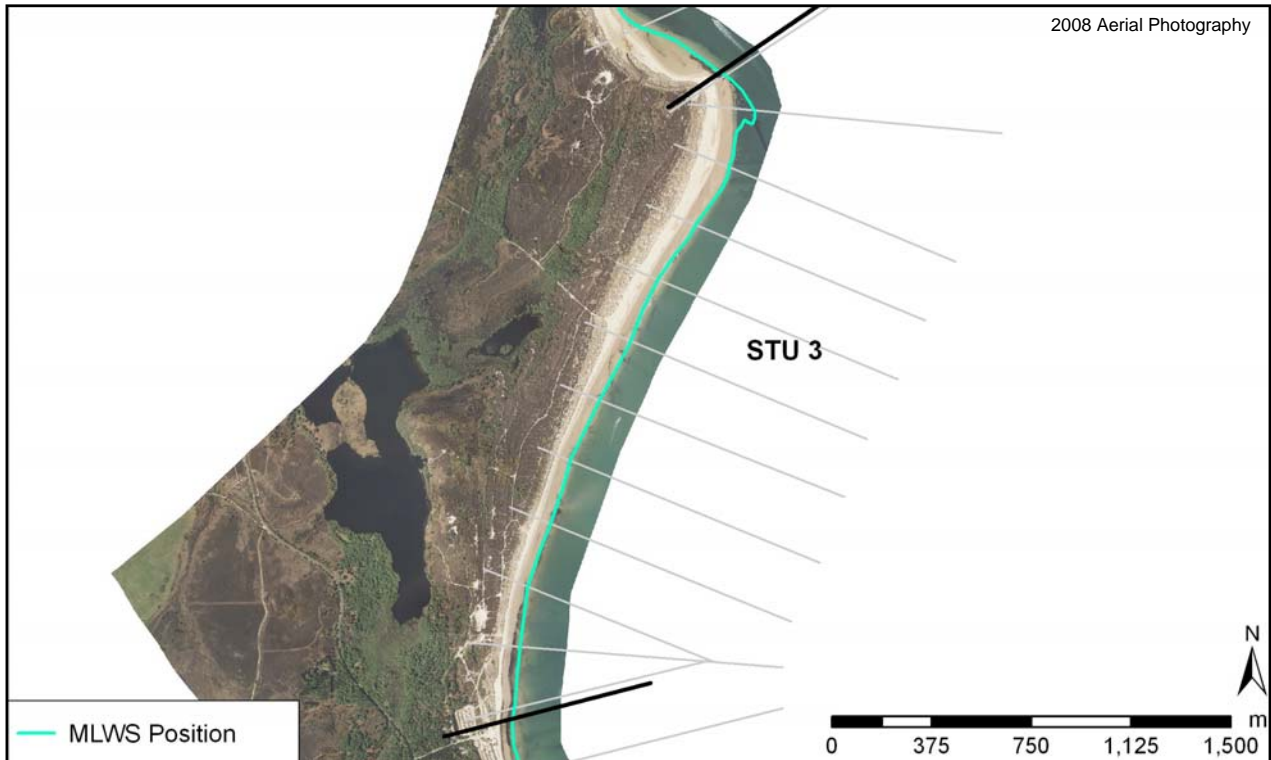


## Policy Unit: 5f STU3

### Studland Sandspit

Topographic Beach Profiles 5f00633 to 5f00686



### Summary

Studland Sandspit extends across a large majority of Studland Bay. It features approximately 2.5km of relatively wide sandy beach, backed by large sand dunes. This extensive dune system lies to the eastern edge of the Studland Heath, a large zone of heathland which is designated as a National Nature Reserve. There are no defence structures.

### Survey Regime

Survey type	Frequency	Profile spacing/survey extent
<i>Topographic interim profiles</i>	Spring and Autumn	250m to MLWS
<i>Topographic baseline</i>	-	-
<i>Bathymetric baseline</i>	5 years	50m to 1km offshore
<i>Ortho-photography</i>	5 years	MLW
<i>Non-rectified aerial photography</i>	Annual	MLW
<i>Lidar</i>	Annual	MLWS
<i>Habitat mapping</i>	5 Years	Extent of ortho-photography