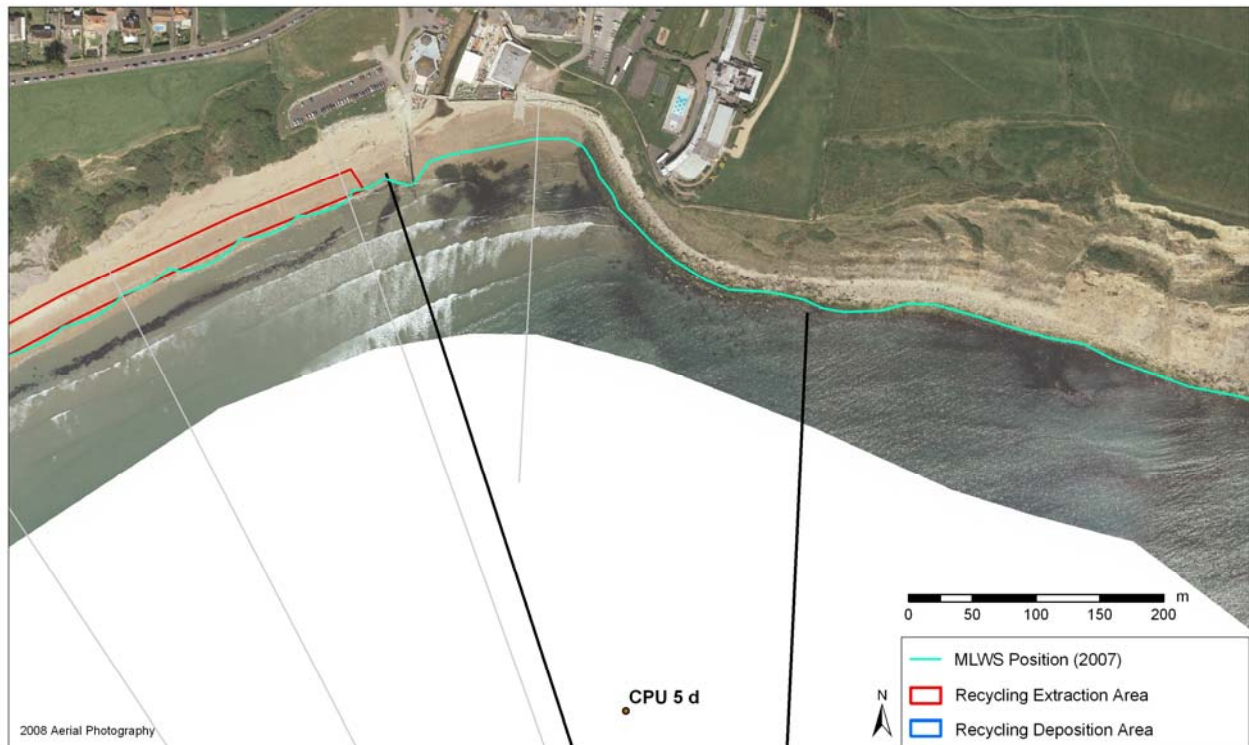


# Policy Unit: 5g CPU5d

## Bowleaze Cove

Topographic Beach Profiles: 5g00288 – 5f00289



### Summary

Bowleaze Cove lies within Weymouth Bay, to the east of Weymouth. The Cove itself is rocky and is formed from the steep cliff on its eastern side. The beach consists of pebble and shingle leading down to soft sand. Rock armour and gabions were constructed here around 1984 with the aim of protecting the toe of the cliffs from erosion due to wave action. The River Jordan flows into the sea at Bowleaze Cove, just east of the jetty, where it can be seen in the photography, flowing out onto the beach at low tide.

### Survey Regime

Survey type	Frequency	Profile spacing/survey extent
<i>Topographic baseline</i>	Annual	1 line to MLWS
<i>Topographic interim profile</i>	Annual	1 line to MLWS
<i>Bathymetry</i>	5 years	50m profiles to 1km offshore
<i>Ortho-photography</i>	5 years	MLWN
<i>Non-rectified aerial photography</i>	Annual	MLWN
<i>Lidar</i>	Annual	MLWN
<i>Habitat mapping</i>	5 Years	Extent of ortho-photography