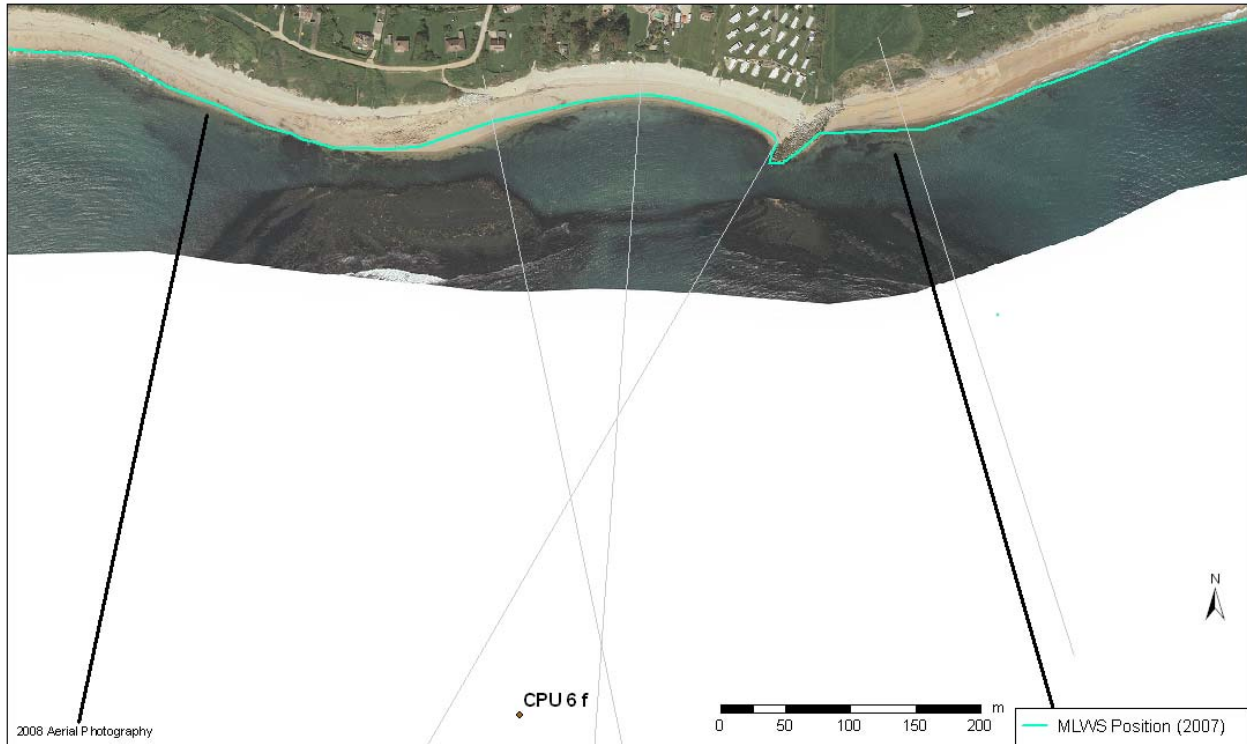


# Policy Unit: 5g CPU6f

## Ringstead Bay (west) to Ringstead

Topographic Beach Profiles: 5g00262 – 5f00264C



### Summary

The beach in this policy unit is a steeply sloping mixture of shingle and sand, protected by an offshore reef. The rock breakwater to the east was constructed in 1996, replacing an older timber seawall. To the back of the beach lie soft Kimmeridge and Oxford clays.

### Survey Regime

Survey type	Frequency	Profile spacing/survey extent
<i>Topographic baseline</i>	5 years	50-70m to MLWS
<i>Topographic interim profile</i>	Spring and autumn	125m to MLWS
<i>Bathymetry</i>	5 years	50m profiles to 1km offshore
<i>Ortho-photography</i>	5 years	MLWN
<i>Non-rectified aerial photography</i>	Annual	MLWN
<i>Lidar</i>	Annual	MLWN
<i>Habitat mapping</i>	5 Years	Extent of ortho-photography